



USAMISH.COM

Our Furniture

1. Poly Products Info
2. Colors & Special Orders
3. Adirondacks
4. Adirondacks & Footrest
5. English Gardens
6. Rollbacks
7. Plain Backs
8. Bar Table, Chairs & Stools
9. Misc Tables ~
End, Coffee & Conversation
10. Picnic ~ Standard & Octagon
11. Tables ~ Trestle Legs
Framed Top & Corner Clipped Framed Top
12. Tables ~ Trestle Legs Plain Top
13. Tables ~ Pedestal Leg
Plain Top & Round Top
14. Table Size with Seating Chair Styles
15. Chairs ~ Dining, Counter & Bar
Adirondacks
16. Chairs ~ Dining, Counter & Bar
Rollbacks, English Gardens, Plain Back & Missions
17. Swivels ~ Dining, Counter & Bar
Adirondacks, English Gardens & Rollbacks
18. Misc ~
Park Benches, Table & Bench Combo,
Chaise Lounges & Trash Receptacles
19. Backless Benches
Bars & Stools
20. Wisconsin Back
Team Spirit Chairs
21. Arbors & Swings
22. Questions & Answers
23. Warranty



New Products



Picture Not Shown



Best Sellers

Made in The U.S.A

Quality in Every Piece

Are you looking for comfortable outdoor poly furniture to complete your patio, gazebo or to just sit and enjoy the view? Are you looking for furniture that you can entertain family and friends with and not spend your time maintaining your outdoor furniture? US AMISH is known for its craftsmanship and quality outdoor furniture. Built with the same craftsmanship as wood furniture; poly furniture is maintenance free furniture that can be left outside all year round.

All of US Amish's furniture is made with highest quality standards for comfort and strength.

- ◆ Frames and arms are built with 1" poly lumber
- ◆ Back and seat slats are built with 3/4" poly lumber
- ◆ A Router is used to cut out all pieces for a beautiful edging, instead of a band saw.
- ◆ Adirondacks have a boxed framed back.
- ◆ Rollback back rests are reinforced for extra stability
- ◆ Backs are designed for comfort and style.
- ◆ Seats are designed with a rolled front edge for comfortable lounging.

Chair Back Styles:



The Adirondack Style originates back to Mountains of Northeastern New York.



The Rollback style named to fit its description, features a higher back in which you can rest your head against, and a formed back to fit your back.



The Plain style is similar to the Rollback back, with the exception it has a shorter back and is not formed to the back. The arms are also narrower than other styles and there are no cupholders. This style is an economical chair with the same quality as all of our styles.



The English Garden style is a traditional back for that perfect spot in your garden to rest and watch your garden grow.



The Mission style is a craftsman design.

95% Recycled Plastic Material - Environmentally friendly product

PVC & BPA Free

No maintenance such as painting, scraping or replacing

Termite resistant

Will not crack or splinter

U.V. stabilized (fade proof)

Chairs, gliders, tables and swings are reinforced with aluminum angle braces

300 Series Stainless Steel Chrome Hardware

Resists corrosion and staining

Low maintenance

Familiar luster provides additional beauty to each piece



Quality
Swivel Glider Systems



Stainless Steel Chrome
Hardware & Swivels



Cupholders

No Cupholders

Wine

Beverage Glass



Quality & Beauty

In a Variety of Colors

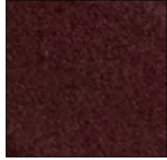
Earth Tones



Cedar



Evergreen



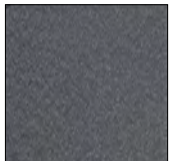
Cherrywood



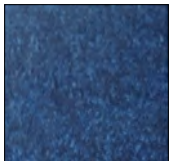
White



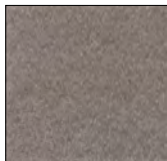
Dove Gray



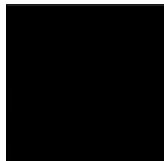
Charcoal



Patriot Blue



Weatherdwood

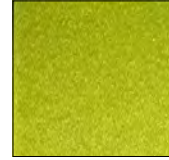


Black



Tudor Brown

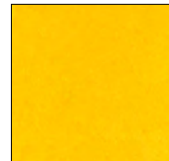
Tropical



Lime Green



Bright Red



Yellow



Orange

Wood Grain



Antique
Mahogany



Birchwood



Driftwood



Aruba Blue

Special Orders

Choose from our selection of rich and vibrant colors to create a unique look that suits your personality. The UV fade resistant material will maintain its vibrancy for years to come.

We welcome your creativity in color selection

Simply select your item

Choose a seat and back (solid or two tone)

Choose a frame color

Adirondacks



AD 215
Swivel Glider
30" x 30" x 41"
Seat Height - 19"
\$1,197



AD 222
2' Glider
30" x 30" x 41"
Seat Height - 17 1/2"
\$885



AD 224
4' Glider
56" x 30" x 41"
Seat Height - 17 1/2"
\$1,360



AD 210
Stationary Chair
29 1/2" x 29" x 34 1/2"
Seat Height - 14"
\$585



AD 211
Folding Chair
29 1/2" x 29" x 34 1/2"
Seat Height - 14"
\$610

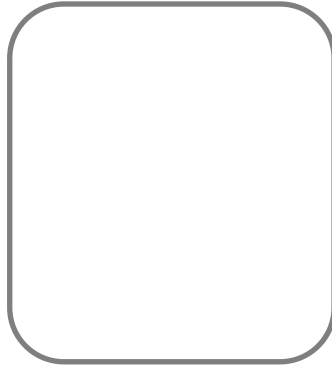


AD 214
4' Love Seat
56" x 30" x 34 1/2"
Seat Height - 14"
\$1,035

Adirondacks



AD 234
4' Bench
 54" x 30" x 40"
 Seat Height - 18"
 \$1,047



AD 232
2' Chair
 30" x 30" x 40"
 Seat Height 18"
 \$397



AD 274
4'Swing
 4" x 30" x 30"
 \$1,010

226
Gliding Footrest
 21 1/2" x 20" x 14"
 \$393



AD 212
Footrest
 22" x 21" x 14"
 \$206



AD 213
4 Leg Footrest
 21" x 22" x 15"
 \$206



AD214
4 Leg Footrest (No slope)
 21" x 22" x 15"
 \$206

Seat Depth – 19" / Back Height – 29"

English Garden



EG 322
2' Glider
 30" x 31" x 35"
 Seat Height - 17 1/2"
 \$785



EG 332
2' Chair
 30" x 31" x 36"
 Seat Height - 18"
 \$585



EG 325
5' Glider
 66" x 31" x 35"
 Seat Height - 17 1/2"
 \$1,360



EG 334
4' Bench
 56" x 29" x 37 1/2"
 Seat Height - 18"
 \$958

EG 335
5' Bench
 68" x 29" x 37 1/2"
 Seat Height - 18"
 \$1,059



EG 374
4' Swing
 54" x 30" x 25"
 \$999

Rollbacks



RB 422
2' Glider
 30"x 32"x 42 1/2"
 Seat Height - 17"
 \$885



RB 424
4' Glider
 54"x 32"x 42"
 Seat Height - 17 1/2"
 \$1,360

RB 425
5' Glider
 64"x 32"x 42 1/2"
 Seat Height - 17 1/2"
 \$1,460



RB 432
2' Chair
 30" x 32" x 42 1/2"
 Seat Height - 18"
 \$572



RB 415
Glider Swivel 30"
 x 32" x 43 1/2"
 Seat Height - 19"
 \$1,047



RB 474
4' Swing
 54"x 32"x 31"
 \$1,010

RB 475
5' Swing
 66"x 32"x 31"
 \$1,110

RB 434
4' Bench
 54" x 32" x 42 1/2"
 \$1,047

RB 435
5' Bench
 66" x 32" x 42 1/2"
 \$1,322.50

Seat Depth - 19" / Back Height - 30"



Plain Back



PL 524

4' Glider

49 1/2" x 28" x 37 1/2"

Seat Height - 17 1/2"

\$1,360

PL 522

2' Glider

25" x 28" x 37 1/2"

Seat Height - 17 1/2"

\$885

PL 515

Swivel Glider

25" x 28" x 37 1/2"

Seat Height - 17 1/2"

\$1,047



PL 532

2' Chair

25" x 28" x 37 1/2"

Seat Height - 18"

\$572



PL 534

4' Bench

49 1/2" x 28" x 37 1/2"

Seat Height - 18"

\$910

PL 535

5' Bench

61 1/2" x 28" x 37 1/2"

Seat Height - 18"

\$1,085

PL 574

4' Swing

49 1/2" x 28" x 28 1/2"

\$960

PL 575

5' Swing

61 1/2" x 28" x 28 1/2"

\$1,025



Tables & Chairs

Tables available with umbrella hole

(Umbrella not included)



PT 3333

Plain Top Bar Table

33" x 33" x 42"

\$1,222

AD 122

Bar Chairs

25" x 31 1/2" x 30" \$760 ea.

USAMISH.com

Miscellaneous Tables



205
Standard End Table
24 1/4" x 14" x 21"
\$310



RT 3720
Conversation Table \$572
37" x 20"



206
Cupholder End Table
20" x 23 1/2" x 20"
\$410



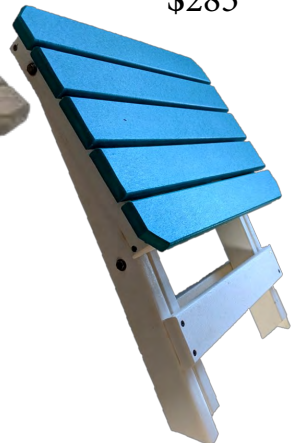
CT 1736
Coffee Table
17" x 36" x 19"
\$472



RT 207
Round End Table
20" x 20"
\$335



209
Folding End Table
20" x 14" x 20 1/4"
\$285



Picnic



PT 3372

Picnic Table

33"x 72"

\$2,347



OT 60

Octagon Picnic Table

94"x 30"

\$2,935

Framed & Clipped Corner with Trestles Legs



Framed Top

FT 3333

Dining \$1,047
33" x 33" x 30"

FT 3838 \$1,072

Dining
38" x 38" x 30"

FT 4444 \$1,172

Dining
44" x 44" x 30"

FT 4255 \$1,422

Dining
42" x 55" x 30"

FT 4260 \$1,510

Dining
42" x 60" x 30"

FT 4272 \$1,635

Dining
42" x 72" x 30"

FT 4284 \$1,735

Dining
42" x 84" x 30"



FT 4272

Dining
42" x 72" x 30"
\$1,635

More Sizes Available ~ Ask for Details

Dining Height - 30"
Counter Height - 36"
Bar Height - 42"



Framed Clipped

FP 4460 \$1,772

Dining
44" x 60" x 30"

FP 4472 \$1,910

Dining
44" x 72" x 30"

FP 4484 \$2,022

Dining
44" x 84" x 30"

FP 4496 \$2,147

Dining
44" x 96" x 30"



FP4460

Counter
44" x 60" x 36"
\$1,947

Plain Top Table with Trestle Legs

Plain Top



PT 4444
Dining
44" x 44" x 30"
\$1,172

PT 3333
Dining
33" x 33" x 30"
\$985

PT 3838
Dining
38" x 38" x 30"
\$1,047

PT 4444
Dining
44" x 44" x 30"
\$1,110

PT 4255
Dining
42" x 55" x 30"
\$1,360

PT 4260
Dining
42" x 60" x 30"
\$1,447

PT 4266
Dining
42" x 66" x 30"
\$1,635

More Sizes Available ~ Ask for Details

Dining Height - 30"

Counter Height - 36"

Bar Height - 42"



S24

Stools make excellent plant stands

\$347

Pedestal Leg Tables

Plain Top Tables with Pedestal Leg



PPL 3330

Dining
33"x 33" x 30"

\$1,072

PPL 3830

Dining
38"x 38" x 30"

\$1,122

PPL 4430

Dining
44"x 44" x 40"

\$1,197

Round Table Top with Pedestal Leg



RT 3230

Dining
32" x 30"
\$847

RT 3730

Dining
37" x 30"
\$947

RT 4330

Dining
43" x 30"
\$1,060

Table Size with Seating of Chair Styles

Round Tables

4 - AD115
4 - AD135
4 - AD135C
4 - EG115
4 - EG135
4 - EG135C
4 - RB115

Square Tables 33", 38" & 44"

4 - AD115
4 - AD135
4 - AD135C
4 - EG115
4 - EG135
4 - EG135C
4 - RB115

Table Size

42"x60" & 44"x60"

6 - AD135
2 - AD135C & 4 - AD135
6 - EG135
2 - EG135C & 4 - EG135
Bench - B60

Table Size

42"x72" & 44"x72"

6 - AD135
2 - AD135C & 4 - AD135
6 - EG135
2 - EG135C & 4 - EG135
6 - AD115
6 - EG115
6 - RB115
Bench - B72

Table Size

42"x84" & 44"x84"

8 - AD135
2 - AD135C & 6 - AD135
8 - EG135
2 - EG135C & 6 - EG135
6 - AD115
6 - EG115
6 - RB115
Bench - B84

" Table Size

42"x96" & 44"x96"

10 - AD135
2 - AD135C & 8 - AD135
10 - EG135
2 - EG135C & 8 - EG135
8 - AD115
8 - EG115
8 - RB115



Chairs

for

Dining, Counter & Bar Tables



Adirondacks



AD 118
\$722

AD 115
Dining
25"x 28"x 38"
\$597

AD 118
Counter
25"x 31 1/2"x 44"
\$722

AD 122
Bar
25"x 31 1/2"x 50"
\$760



AD 135
\$572

AD 135
Side Dining 21"x
21 1/2" x 40"
\$572

AD 138
Side Counter
21"x 21 1/2" 46"
\$660

AD 132
Side Bar
21"x 21 1/2" x 52"
\$760



AD 135C
Captain Dining
21"x 21 1/2" x 40"
\$635

AD138C
Captain Counter
21"x 21 1/2" 46"
\$722

AD 132C
Captain Bar 21"x
21 1/2" x 52"
\$822

AD 135C
\$635



AD 138
\$660

Chairs

for
Dining, Counter & Bar Tables

Rollbacks



English Garden



RB 115

Mission

M 118 \$572

Dining
19"x 22 1/2"x 37"

M 119 \$592

Counter
19"x 22 1/2"x 43"

M 120 \$697

Bar
19"x 22 1/2"x 49"



M 118 \$635

RB 115

Dining
25"x 30"x 38"

\$597

RB 118

Counter
25"x 33 1/2"x 44"

\$722

RB 122

Bar
25"x 33 1/2"x 50"
\$760



EG 118

EG 115

Dining
25"x 28"x 38"

\$597

EG 118

Counter
25"x 31 1/2"x 44"

\$722

EG 122

Bar
25"x 31 1/2"x 50"
\$760



Plain

PL 135

Side Dining Chair

PL135C

Captain Dining Chair

PL 138

Side Counter Chair

PL 138C

Captain Counter Chair

PL 132

Side Bar Chair

PL 132C

Captain bar Chair

PL 115

Dining
25"x 30"x 38"

PL 118

Counter
25"x 33 1/2"x 44"

PL 122

Bar
25"x 33 1/2"x 50"

Same Price
As English
Garden

EG 135 \$572

Side Dining Chair

EG 135C \$592

Captain Dining Chair

EG 138 \$697

Side Counter Chair

EG 138C \$705

Captain Counter Chair

EG 132 \$760

Side Bar Chair

EG 132C \$799

Captain bar Chair



Swivel Chairs



AD 122 SW
\$910



RB 122 SW
\$910



EG 118 SW
\$822

Adirondacks

AD115 SW

Dining
25"x 28"x 38"
\$882

AD 118 SW

Counter
25"x 33 ½"x 44"
\$847

AD 122 SW

Bar
25"x 33 ½"x 50"
\$910

Rollbacks

RB 115 SW

Dining
25"x 30"x 38"
\$822

RB 118 SW

Counter
25"x 33 ½"x 44"
\$847

RB 122 SW

Bar
25"x 33 ½"x 50"
\$910

English Garden

EG 115 SW

Dining
25"x 30"x 38"
\$822

EG 118 SW

Counter
25"x 33 ½"x 44"
\$847

EG 122 SW

Bar
25"x 33 ½"x 50"
\$910

Miscellaneous



442
4' Park
Bench 48"x
24"x 36"
\$1,047



443
5' Table & Bench Combo
58"x 28"x 32"
\$1,172



241
Chaise Lounge (Flat)
Ability to lay flat
79"x 22"x 15"
\$857

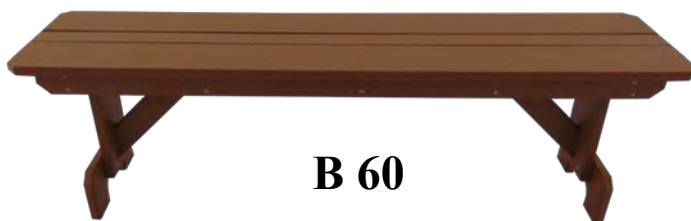


242
Chaise Lounge
72"x 34 1/4"x 20 1/2"
\$897



TR 2631
Trash
Receptacle 26"x
26" x 31"
\$885

Backless Benches



B 60

B 42 \$447

42"x 13 3/4" x 18"

B 48 \$472

48"x 13 3/4" x 18"

B 60 \$535

60"x 13 3/4" x 18"

B 72 \$572

72"x 13 3/4" x 18"

B 96 \$635

96"x 13 3/4" x 18"



B 96



FB 48

Fire Pit Bench
Curved Seat
13"x 49"x 18"

\$472

Bars & Stools



BR 336
\$3,060



S 36
\$385



S 18
\$310

S 18

Dining

13 1/2" R x 18"

\$178.00

S 24

Counter

13 1/2" R x 24"

\$200.00

S 36

Bar

13 1/2" R x 36"

\$385

BR 334

4' Bar

33"x 48"x 42"
\$2,810

BR 335

5' Bar

33"x 60"x 42"
\$2,935

BR 336

6' Bar

33"x 72"x 42"
\$3,060

Show Your Team Spirit!



Check the Poly Colors available for your favorite team

*** Not all colors are available***

*** Wisconsin is the only state back that is available***

Arbors

AR 48

Arbor w/ 4' Swing

93"x 55"x 96"

\$4,010

AR 60

Arbor w/ 5' Swing

105"x 55"x 96"

\$4,197

AR 34

34" Arbor

No Swing

\$2,510



AR 48

Arbor

67" x 55" x 96" \$2,705



Arbors available in white only. Swing styles and colors are Adirondacks (pg 4) or Rollbacks (pg 5).

Questions & Answers

What material is our furniture made of?

Approximately 95% is from High Density Polyethylene (HDPE), or recycled plastic milk containers.

How can it be durable and comfortable?

HDPE is a naturally flexible polymer that molds to your body for exceptional comfort. It won't crack, break, splinter or peel as our unique recipe doesn't allow it to break down or become brittle from the sun or cold. It's actually a wood substitute; making it as dense as wood and approximately 20% heavier than cedar, without the maintenance.

How do I clean the furniture?

Water will remove most soil. You may use any non-abrasive cleaner; including bleach if necessary to sanitize. High pressure washing is recommended for white pieces. Since the material is non-porous it will not absorb spills that may stain.

How do I store the furniture?

Our furniture is made to withstand extreme climates and temperature changes. Whether you live in freezing cold of Minnesota, the dry desert of Arizona or the salt water of the Florida Keys; our furniture is made to last a lifetime.

Does the color fade?

Unlike most other manufacturer's the material used to fabricate our furniture is considered colorfast. It will not fade more than 3% over a 10year period; a color change that is generally not noticeable to the human eye. The color runs throughout each piece and has a UV-inhibitor incorporated into the material to minimize the chance for any discoloration.

Is assembly required?

We ship fully assembled and blanket wrapped to our dealers.

We do offer direct ship on several items for additional costs to dealer's and their customers to all 48 states. Some assembly is required then. Ask for details.

Is the furniture made in the USA?

Yes, we are proud to say that our full product line is manufactured in the Driftless area of Wisconsin by Amish employees.

We reserve the right to modify or discontinue any design, price, term, color or product offering without prior notification. All Returns maybe subject to restocking charge.

Warranty

USAmish offers a limited warranty up to 5 years for residential enjoyment and 2 years for commercial enjoyment.

Our Polyethylene outdoor furniture products will be free of original defects in workmanship and materials. In the event, that a product item needs to be replaced completely and is no longer offered in our collection; an item of similar value and style will be offered.

Additional charges such as labor and freight/handling are not included in this warranty. Normal wear and tare, scratching or chipping of polyethylene, negligence, abuse, staining, fading, chemical misuse and acts of nature do not pertain to this warranty.

The stainless-steel fasteners are covered as part of this warranty against structural failure. Stainless steel fasteners may rust in certain conditions if not cared for properly; rusting hardware is not covered in this warranty.

Structural failure due to rusting fasteners, damage caused by unauthorized service or repair, fabrication or revisions to original finished product or any attempt to use in a manner other than the purpose for which it is intended is not covered under this warranty. All claims need proof of purchase.